



Plastomed

Systems for your life...



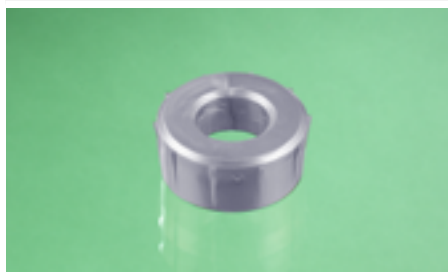
PLASTIC PLUGS



Innovative plastic products and systems for medicine and technology

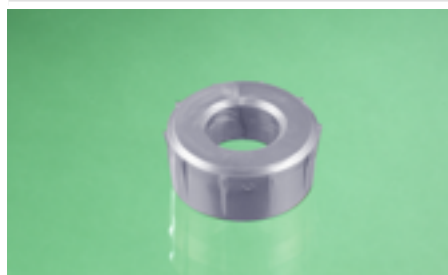
PLASTIC PLUGS

PLASTIC PLUGS, 50 mm



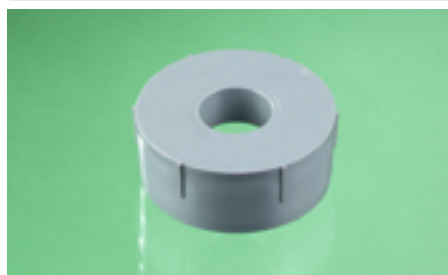
REF	Material	Ø external, without ribs	Ø inside	PCS
900/5010	PS	52,0 mm	26,5 mm	12.000 pcs/box*
900/5010_3				500 pcs/bag
900/5000	PE	50,5 mm	24,5 mm	12.000 pcs/box*
900/5000_3				500 pcs/bag

PLASTIC PLUGS, 52 mm



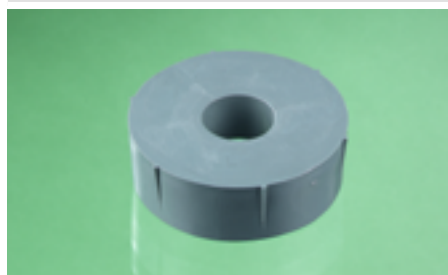
REF	Material	Ø external, without ribs	Ø inside	PCS
900/5210	PS	54,0 mm	27,5 mm	12.000 pcs/box*
900/5210_3				500 pcs/bag
900/5200	PE	52,5 mm	27,0 mm	12.000 pcs/box*
900/5200_3				500 pcs/bag

PLASTIC PLUGS, 72 mm



REF	Material	Ø external	Ø inside	PCS
900/7210	PS	71,0 mm	26,0 mm	5.000 pcs/box*
900/7210_3				500 pcs/bag
900/7200	PE	69,5 mm	25,0 mm	5.000 pcs/box*
900/7200_3				500 pcs/bag

PLASTIC PLUGS, 76 mm

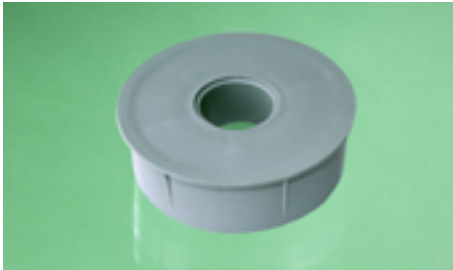


REF	Material	Ø external	Ø inside	PCS
900/7610	PS	78,0 mm	26,0 mm	4.000 pcs/box*
900/7610_3				500 pcs/bag
900/7600	PE	75,5 mm	25,0 mm	5.000 pcs/box*
900/7600_3				500 pcs/bag

* box = barred box

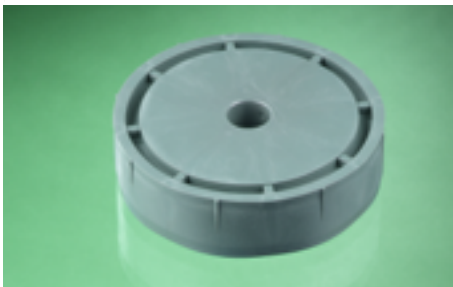
PLASTIC PLUGS

PLASTIC PLUGS rimmed, 76 mm



REF	Material	Ø external	Ø inside	PCS
900/7611	PS	78,0 mm	26,0 mm	4.000 pcs/box*
900/7611_3				500 pcs/bag
900/7601	PE	76,0 mm	25,0 mm	4.000 pcs/box*
900/7601_3				500 pcs/bag

PLASTIC PLUGS, 150 mm



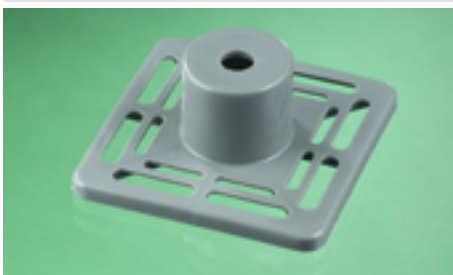
REF	Material	Ø external	Ø inside	PCS
900/15000	PE	150,0 mm	24,0 mm	500 pcs/box*

PLASTIC PLUGS, 49,5 mm



REF	Material	Ø cone	edge length	PCS
900/49500	PE	49,5 mm	100 x 100 mm	3.000 pcs/box*

PLASTIC PLUGS, 49,5 mm



REF	Material	Ø cone	edge length	PCS
900/49510	PE	49,5 mm	119 x 119 mm	2.000 pcs/box*

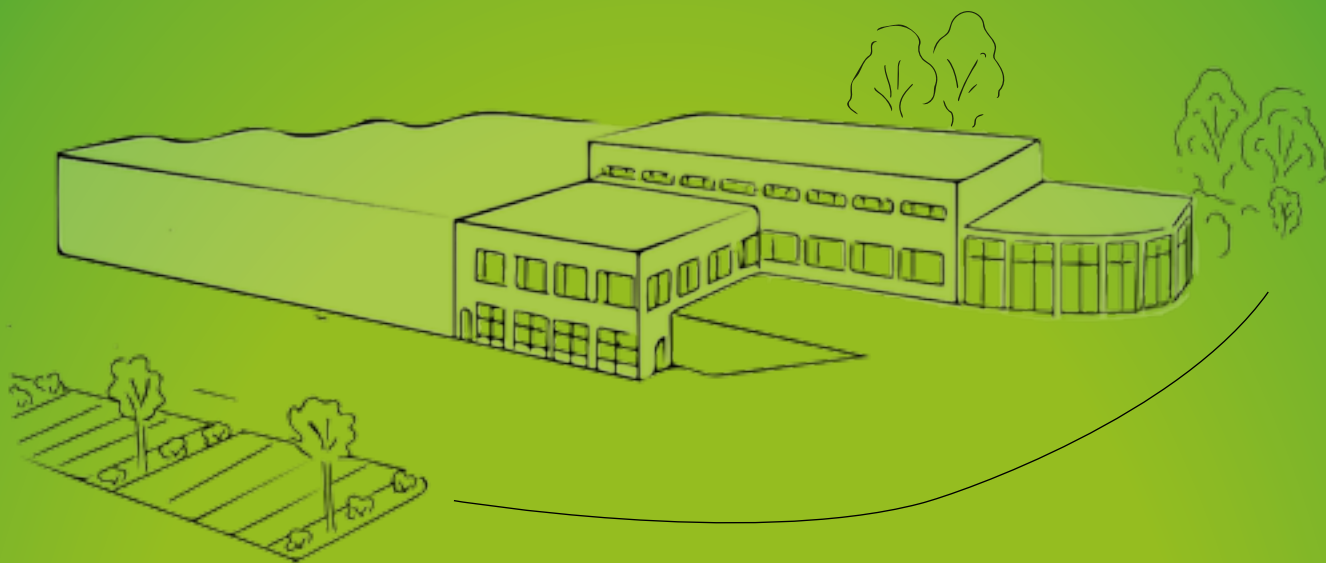
* box = barred box

INQUIRY ORDER

<input type="text"/>		<input type="text"/>	
Company		Name	
<input type="text"/>		<input type="text"/>	
Adress		Zip, City	
<input type="text"/>	<input type="text"/>	<input type="text"/>	
Fon	Fax	E-Mail	

Product name	REF	Number	Select items	Number
PLASTIC PLUGS, 50 mm	900/5010	12.000 pcs/box		
	900/5010_3	500 pcs/bag		
	900/5000	12.000 pcs/box		
	900/5000_3	500 pcs/bag		
PLASTIC PLUGS, 52 mm	900/5210	12.000 pcs/box		
	900/5210_3	500 pcs/bag		
	900/5200	12.000 pcs/box		
	900/5200_3	500 pcs/bag		
PLASTIC PLUGS, 72 mm	900/7210	5.000 pcs/box		
	900/7210_3	500 pcs/bag		
	900/7200	5.000 pcs/box		
	900/7200_3	500 pcs/bag		
PLASTIC PLUGS, 76 mm	900/7610	4.000 pcs/box		
	900/7610_3	500 pcs/bag		
	900/7600	5.000 pcs/box		
	900/7600_3	500 pcs/bag		
PLASTIC PLUGS rimmed, 76 mm	900/7611	4.000 pcs/box		
	900/7611_3	500 pcs/bag		
	900/7601	4.000 pcs/box		
	900/7601_3	500 pcs/bag		
PLASTIC PLUGS, 150 mm	900/15000	500 pcs/bag		
PLASTIC PLUGS, 49,5 mm	900/49500	3.000 pcs/box		
PLASTIC PLUGS, 49,5 mm	900/49510	2.000 pcs/box		

Date, signature



SEM-Plastomed GmbH
Schulstr. 6
D-57612 Obererbach
Fon: +49 (0) 2681 - 95 07 80
Fax: +49 (0) 2681 - 95 07 818
mail@plastomed.eu
www.plastomed.eu

