

Systems for your life...



OP-SUCTION SETS / HANDPIECES



Innovative plastic products and systems for medicine and technology

Product Description

As one of Europe's leading suppliers, we produce an extensive & flexible assortment of OP suction systems. This wide range results through the use of wide-ranging tube types and lengths, each custom-made according to individual specifications.

All products are available, sterile and individually packed in peel pack. Alternatively, we can even pack your products individually into PE bags. Then you have the option of putting them together into individual OP sets, ready for packaging.

Suction tubes have to remain kink-free in order

to guarantee trouble-free functionality. The necessary right balance of flexibility coupled with stability is reached by our tubes through an optimised ratio of diameter to wall thickness. All suction sets are free from Latex components and DEHP-free.

Our tube sets / conical attachments guarantee absolutely safe connection / disconnection of the tube and are suitable for all suction units, bags & related systems.

Notes when ordering

The following pages will give you an overview of our product assortment. Furthermore, we produce custom-made OP suction sets in bespoke lengths, diameters and connectors / adapters.

Some examples of article composition

REF:	OS-300-25 YN100
OS:	Suction set
300:	Tube lengths incl. suction handpiece in cm
25:	CH sizes for tubes
YN100:	Suction type

Application fields

Other surgery

Oral surgery

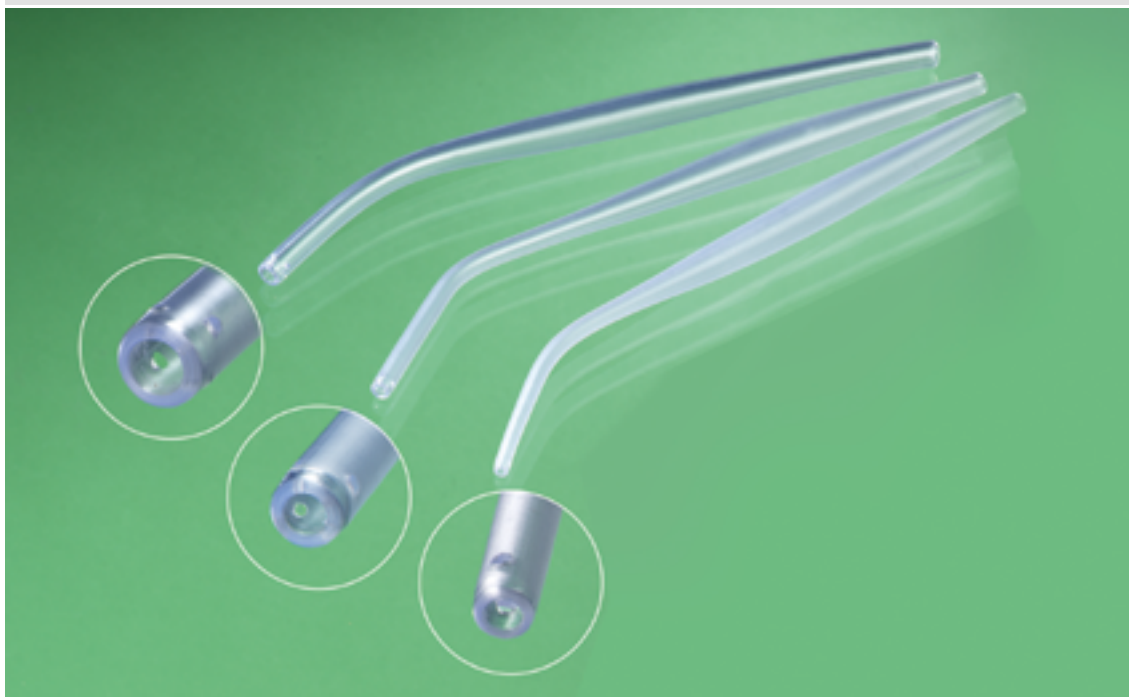
Orthopedics

Contents

content	page
YANKAUER TYPE „BUBBLE“	4
OP-Suction sets with Yankauer Handpiece „FINE“	5
OP-Suction sets with Yankauer Handpiece „FINE VC“	5
OP-Suction sets with Yankauer Handpiece „MIDI“	5
OP-Suction sets with Yankauer Handpiece „MIDI VC“	6
OP-Suction sets with Yankauer Handpiece „MAXI“	6
OP-Suction sets with Yankauer Handpiece „MAXI VC“	6
Suction cannula „NORMAL“ (TYPE YN-...) with or without Handgrip	7
OP-Suction sets with suction attachment normal, TYPE „YN-100“	8
OP-Suction sets with suction attachment normal, TYPE „YN-101“	8
OP-Suction sets with suction attachment normal, TYPE „YN-102“	8
OP-Suction sets with suction attachment normal, TYPE „YN-103/YN 104“	8
Suction cannula „NORMAL“ (TYPE YN-...) with or without Handgrip	9
OP-Suction sets with suction attachment default, TYPE „YS-200“	10
OP-Suction sets with suction attachment default, TYPE „YS-201“	10
OP-Suction sets with suction attachment default, TYPE „YS-202“	10
OP-Suction sets with suction attachment default, TYPE „YS-203“	10
OP-Suction sets with suction attachment default, TYPE „YS-204“	11
OP-Suction sets with suction attachment default, TYPE „YS-205“	11
OP-Suction sets with suction attachment default, TYPE „YS-206“	11
OP-Suction sets with suction attachment default, TYPE „YS-207“	11
SUCTION CANNULA „ORTHOPEDICS“ (TYPE YO-...) with or without Handgrip	12
OP-Suction sets with suction attachment orthopedics, TYPE „YO-300“	13
OP-Suction sets with suction attachment orthopedics, TYPE „YO-301“	13
OP-Suction sets with suction attachment orthopedics, TYPE „YO-302/YO-303“	13
SUCTION CANNULA „ILEUS POOL“ (TYPE YP-...) with Handgrip	14
OP-Suction sets with suction attachment Ileus Pool, TYPE „YP-400“	15
OP-Suction sets with suction attachment Ileus Pool, TYPE „YP-401“	15
Ordering information	
Order formula	15

OP-SUCTION / HANDPIECES

YANKAUER TYPE „BUBBLE“



Ident-no.	REF	size	length (cm)	AD (mm)	Lateral eyes	PCS
51004	YE-32004	Fine	260	4.0	2	100
51005	YF-32005	Fine VC*	260	4.0	2	100
51006	YG-32006	Midi	260	6.0	4	100
51007	YH-32007	Midi VC*	260	6.0	4	100
51008	YI-32008	Maxi	260	8.0	4	100
51009	YJ-32009	Maxi VC*	260	8.0	4	100

*VC: Vacuum Control

OP-SUCTION / HANDPIECES

OP-SUCTION SETS WITH YANKAUER HANDPIECE „FINE“



Ident-no.	REF	length (cm)	CH-size	PCS
41400	OS - 210 - 25 YES	210	25	50
41401	OS - 250 - 25 YES	250	25	50
41402	OS - 300 - 25 YES	300	25	50
41403	OS - 350 - 25 YES	350	25	50
41404	OS - 210 - 30 YES	210	30	50
41405	OS - 250 - 30 YES	250	30	50
41406	OS - 300 - 30 YES	300	30	50
41407	OS - 350 - 30 YES	350	30	40

OP-SUCTION SETS WITH YANKAUER HANDPIECE „FINE VC“



Ident-no.	REF	length (cm)	CH-size	PCS
41500	OS - 210 - 25 YFS	210	25	50
41501	OS - 250 - 25 YFS	250	25	50
41502	OS - 300 - 25 YFS	300	25	50
41503	OS - 350 - 25 YFS	350	25	50
41504	OS - 210 - 30 YFS	210	30	50
41505	OS - 250 - 30 YFS	250	30	50
41506	OS - 300 - 30 YFS	300	30	50
41507	OS - 350 - 30 YFS	350	30	40

OP-SUCTION SETS WITH YANKAUER HANDPIECE „MIDI“



Ident-no.	REF	length (cm)	CH-size	PCS
41600	OS - 210 - 25 YGS	210	25	50
41601	OS - 250 - 25 YGS	250	25	50
41602	OS - 300 - 25 YGS	300	25	50
41603	OS - 350 - 25 YGS	350	25	50
41604	OS - 210 - 30 YGS	210	30	50
41605	OS - 250 - 30 YGS	250	30	50
41606	OS - 300 - 30 YGS	300	30	50
41607	OS - 350 - 30 YGS	350	30	40

OP-SUCTION / HANDPIECES

OP-SUCTION SETS WITH YANKAUER HANDPIECE „MIDI VC“



Ident-no.	REF	length (cm)	CH-size	PCS
41700	OS - 210 - 25 YHS	210	25	50
41701	OS - 250 - 25 YHS	250	25	50
41702	OS - 300 - 25 YHS	300	25	50
41703	OS - 350 - 25 YHS	350	25	50
41704	OS - 210 - 30 YHS	210	30	50
41705	OS - 250 - 30 YHS	250	30	50
41706	OS - 300 - 30 YHS	300	30	50
41707	OS - 350 - 30 YHS	350	30	40

OP-SUCTION SETS WITH YANKAUER HANDPIECE „MAXI“



Ident-no.	REF	length (cm)	CH-size	PCS
41800	OS - 210 - 25 YIS	210	25	50
41801	OS - 250 - 25 YIS	250	25	50
41802	OS - 300 - 25 YIS	300	25	50
41803	OS - 350 - 25 YIS	350	25	50
41804	OS - 210 - 30 YIS	210	30	50
41805	OS - 250 - 30 YIS	250	30	50
41806	OS - 300 - 30 YIS	300	30	50
41807	OS - 350 - 30 YIS	350	30	40

OP-SUCTION SETS WITH YANKAUER HANDPIECE „MAXI VC“



Ident-no.	REF	length (cm)	CH-size	PCS
41500	OS - 210 - 25 YJS	210	25	50
41501	OS - 250 - 25 YJS	250	25	50
41502	OS - 300 - 25 YJS	300	25	50
41503	OS - 350 - 25 YJS	350	25	50
41504	OS - 210 - 30 YJS	210	30	50
41505	OS - 250 - 30 YJS	250	30	50
41506	OS - 300 - 30 YJS	300	30	50
41507	OS - 350 - 30 YJS	350	30	40

SUCTION CANNULA "NORMAL" (TYPE YN-...) with or without Handgrip



Ident-no.	REF	size	length (cm)	AD (mm)	Lateral eyes	PCS
51010	YN-100	tapered tip with handpiece	260	4	2	100
51011	YN-101	with handpiece	260	6	4	100
51012	YN-102	with handpiece	260	8	4	100
51013	YN-103	without handpiece	200	10	4	100
51014	YN-104	without handpiece	200	6	4	100

OP-SUCTION / HANDPIECES

OP-SUCTION SETS WITH SUCTION ATTACHMENT NORMAL, TYPE „YN-100“



Ident-no.	REF	length (cm)	CH-size	PCS
42100	OS - 210 - 25 YN 100	210	25	50
42101	OS - 250 - 25 YN 100	250	25	50
42102	OS - 300 - 25 YN 100	300	25	50
42103	OS - 350 - 25 YN 100	350	25	50
42104	OS - 210 - 30 YN 100	210	30	50
42105	OS - 250 - 30 YN 100	250	30	50
42106	OS - 300 - 30 YN 100	300	30	50
42107	OS - 350 - 30 YN 100	350	30	40

OP-SUCTION SETS WITH SUCTION ATTACHMENT NORMAL, TYPE „YN-101“



Ident-no.	REF	length (cm)	CH-size	PCS
42110	OS - 210 - 25 YN 101	210	25	50
42111	OS - 250 - 25 YN 101	250	25	50
42112	OS - 300 - 25 YN 101	300	25	50
42113	OS - 350 - 25 YN 101	350	25	50
42114	OS - 210 - 30 YN 101	210	30	50
42115	OS - 250 - 30 YN 101	250	30	50
42116	OS - 300 - 30 YN 101	300	30	50
42117	OS - 350 - 30 YN 101	350	30	40

OP-SUCTION SETS WITH SUCTION ATTACHMENT NORMAL, TYPE „YN-102“



Ident-no.	REF	length (cm)	CH-size	PCS
42120	OS - 210 - 25 YN 102	210	25	50
42121	OS - 250 - 25 YN 102	250	25	50
42122	OS - 300 - 25 YN 102	300	25	50
42123	OS - 350 - 25 YN 102	350	25	50
42124	OS - 210 - 30 YN 102	210	30	50
42125	OS - 250 - 30 YN 102	250	30	50
42126	OS - 300 - 30 YN 102	300	30	50
42127	OS - 350 - 30 YN 102	350	30	40

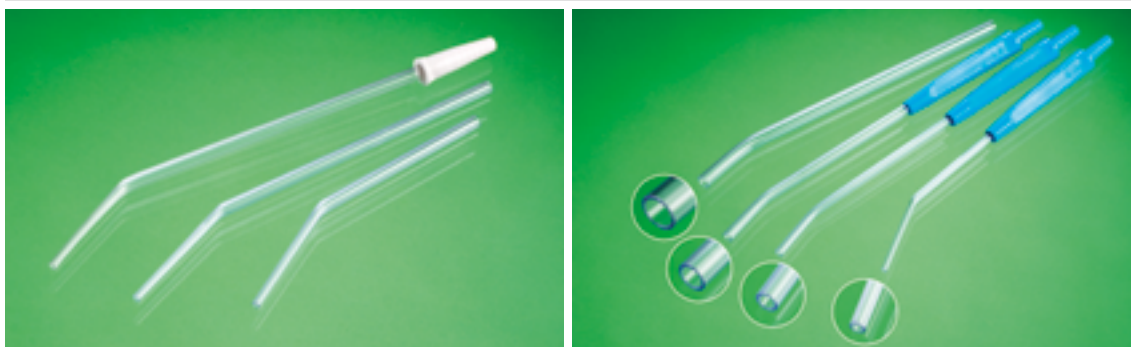
OP-SUCTION SETS WITH SUCTION ATTACHMENT NORMAL, TYPE „YN-103/YN 104“



Ident-no.	REF	length (cm)	CH-size	PCS
42134	OS - 210 - 30 YN 103	210	30	50
42135	OS - 250 - 30 YN 103	250	30	50
42136	OS - 300 - 30 YN 103	300	30	50
42137	OS - 350 - 30 YN 103	350	30	40
42140	OS - 210 - 25 YN 104	210	25	50
42141	OS - 250 - 25 YN 104	250	25	50
42142	OS - 300 - 25 YN 104	300	25	50
42143	OS - 350 - 25 YN 104	350	25	50

OP-SUCTION / HANDPIECES

Suction cannula "NORMAL" (TYPE YN-...) with or without Handgrip



Ident-no.	REF	execution	length (cm)	AD (mm)	Lateral eyes	PCS
51020	YS-200	tapered tip, with stepped connector	240	4	0	100
51021	YS-201	tapered tip, with stepped connector	240	4	0	100
51022	YS-202	tapered tip, without handpiece	150	4	0	100
51023	YS-203	tapered tip, with handpiece	245	4	0	100
51024	YS-204	tapered tip, without handpiece	210	4	0	100
51025	YS-205	with handpiece	250	6	0	100
51026	YS-206	with handpiece	250	8	0	100
51027	YS-207	without handpiece	220	10	0	100

*VC: Vacuum Control

OP-SUCTION / HANDPIECES

OP-SUCTION SETS WITH SUCTION ATTACHMENT DEFAULT, TYPE „YS-200“



Ident-no.	REF	length (cm)	CH-size	PCS
42200	OS - 210 - 25 YS 200	210	25	50
42201	OS - 250 - 25 YS 200	250	25	50
42202	OS - 300 - 25 YS 200	300	25	50
42203	OS - 350 - 25 YS 200	350	25	50
42204	OS - 210 - 30 YS 200	210	30	50
42205	OS - 250 - 30 YS 200	250	30	50
42206	OS - 300 - 30 YS 200	300	30	50
42207	OS - 350 - 30 YS 200	350	30	40

OP-SUCTION SETS WITH SUCTION ATTACHMENT DEFAULT, TYPE „YS-201“



Ident-no.	REF	length (cm)	CH-size	PCS
42210	OS - 210 - 25 YS 201	210	25	50
42211	OS - 250 - 25 YS 201	250	25	50
42212	OS - 300 - 25 YS 201	300	25	50
42213	OS - 350 - 25 YS 201	350	25	50
42214	OS - 210 - 30 YS 201	210	30	50
42215	OS - 250 - 30 YS 201	250	30	50
42216	OS - 300 - 30 YS 201	300	30	50
42217	OS - 350 - 30 YS 201	350	30	40

OP-SUCTION SETS WITH SUCTION ATTACHMENT DEFAULT, TYPE „YS-202“



Ident-no.	REF	length (cm)	CH-size	PCS
42220	OS - 210 - 25 YS 202	210	25	50
42221	OS - 250 - 25 YS 202	250	25	50
42222	OS - 300 - 25 YS 202	300	25	50
42223	OS - 350 - 25 YS 202	350	25	50
42224	OS - 210 - 30 YS 202	210	30	50
42225	OS - 250 - 30 YS 202	250	30	50
42226	OS - 300 - 30 YS 202	300	30	50
42227	OS - 350 - 30 YS 202	350	30	40

OP-SUCTION SETS WITH SUCTION ATTACHMENT DEFAULT, TYPE „YS 203“



Ident-no.	REF	length (cm)	CH-size	PCS
42230	OS - 210 - 25 YS 203	210	25	50
42231	OS - 250 - 25 YS 203	250	25	50
42232	OS - 300 - 25 YS 203	300	25	50
42233	OS - 350 - 25 YS 203	350	25	50
42234	OS - 210 - 30 YS 203	210	30	50
42235	OS - 250 - 30 YS 203	250	30	50
42236	OS - 300 - 30 YS 203	300	30	50
42237	OS - 350 - 30 YS 203	350	30	40

OP-SUCTION/ HANDPIECES

OP-SUCTION SETS WITH SUCTION ATTACHMENT DEFAULT, TYPE „YS-204“



Ident-no.	REF	length (cm)	CH-size	PCS
42240	OS - 210 - 25 YS 204	210	25	50
42241	OS - 250 - 25 YS 204	250	25	50
42242	OS - 300 - 25 YS 204	300	25	50
42243	OS - 350 - 25 YS 204	350	25	50
42244	OS - 210 - 30 YS 204	210	30	50
42245	OS - 250 - 30 YS 204	250	30	50
42246	OS - 300 - 30 YS 204	300	30	50
42247	OS - 350 - 30 YS 204	350	30	40

OP-SUCTION SETS WITH SUCTION ATTACHMENT DEFAULT, TYPE „YS-205“



Ident-no.	REF	length (cm)	CH-size	PCS
42250	OS - 210 - 25 YS 205	210	25	50
42251	OS - 250 - 25 YS 205	250	25	50
42252	OS - 300 - 25 YS 205	300	25	50
42253	OS - 350 - 25 YS 205	350	25	50
42254	OS - 210 - 30 YS 205	210	30	50
42255	OS - 250 - 30 YS 205	250	30	50
42256	OS - 300 - 30 YS 205	300	30	50
42257	OS - 350 - 30 YS 205	350	30	40

OP-SUCTION SETS WITH SUCTION ATTACHMENT DEFAULT, TYPE „YS-206“



Ident-no.	REF	length (cm)	CH-size	PCS
42260	OS - 210 - 25 YS 206	210	25	50
42261	OS - 250 - 25 YS 206	250	25	50
42262	OS - 300 - 25 YS 206	300	25	50
42263	OS - 350 - 25 YS 206	350	25	50
42264	OS - 210 - 30 YS 206	210	30	50
42265	OS - 250 - 30 YS 206	250	30	50
42266	OS - 300 - 30 YS 206	300	30	50
42267	OS - 350 - 30 YS 206	350	30	40

OP-SUCTION SETS WITH SUCTION ATTACHMENT DEFAULT, TYPE „YS-207“



Ident-no.	REF	length (cm)	CH-size	PCS
42274	OS - 210 - 30 YS 207	210	30	50
42275	OS - 250 - 30 YS 207	250	30	50
42276	OS - 300 - 30 YS 207	300	30	50
42277	OS - 350 - 30 YS 207	350	30	40

SUCTION CANNULA „ORTHOPEDICS“ (TYPE YO-...) with or without Handgrip



Ident-no.	REF	size	length (cm)	AD (mm)	Lateral eyes	PCS
51031	YO-300	with handpiece flattened tip	260	6	0	100
51032	YO-301	with handpiece flattened tip	260	8	0	100
51033	YO-302	without handpiece flattened tip	260	10	0	100
51034	YO-303	without handpiece flattened tip	220	6	0	100

OP-SUCTION / HANDPIECES

OP-SUCTION SETS WITH SUCTION ATTACHMENT ORTHOPEDICS, TYPE „YO-300“



Ident-no.	REF	length (cm)	CH-size	PCS
42300	OS - 210 - 25 YO 300	210	25	50
42301	OS - 250 - 25 YO 300	250	25	50
42302	OS - 300 - 25 YO 300	300	25	50
42303	OS - 350 - 25 YO 300	350	25	50
42304	OS - 210 - 30 YO 300	210	30	50
42305	OS - 250 - 30 YO 300	250	30	50
42306	OS - 300 - 30 YO 300	300	30	50
42307	OS - 350 - 30 YO 300	350	30	40

OP-SUCTION SETS WITH SUCTION ATTACHMENT ORTHOPEDICS, TYPE „YO-301“



Ident-no.	REF	length (cm)	CH-size	PCS
42310	OS - 210 - 25 YO 301	210	25	50
42311	OS - 250 - 25 YO 301	250	25	50
42312	OS - 300 - 25 YO 301	300	25	50
42313	OS - 350 - 25 YO 301	350	25	50
42314	OS - 210 - 30 YO 301	210	30	50
42315	OS - 250 - 30 YO 301	250	30	50
42316	OS - 300 - 30 YO 301	300	30	50
42317	OS - 350 - 30 YO 301	350	30	40

OP-SUCTION SETS WITH SUCTION ATTACHMENT ORTHOPEDICS, TYPE „YO-302/YO-303“



Ident-no.	REF	length (cm)	CH-size	PCS
42324	OS - 210 - 30 YO 302	210	30	50
42325	OS - 250 - 30 YO 302	250	30	50
42326	OS - 300 - 30 YO 302	300	30	50
42327	OS - 350 - 30 YO 302	350	30	40
42330	OS - 210 - 25 YO 303	210	30	50
42331	OS - 250 - 25 YO 303	250	30	50
42332	OS - 300 - 25 YO 303	300	30	50
42333	OS - 350 - 25 YO 303	350	30	50

SUCTION CANNULA „ILEUS POOL“ (TYPE YP-...) without Handgrip



Ident-no.	REF	execution	PCS
51040	YP-400	with handpiece straight tip	100
51041	YP-401	with handpiece curved tip	100

OP-SUCTION SETS WITH SUCTION ATTACHMENT ILEUS POOL, TYPE „YP-400“

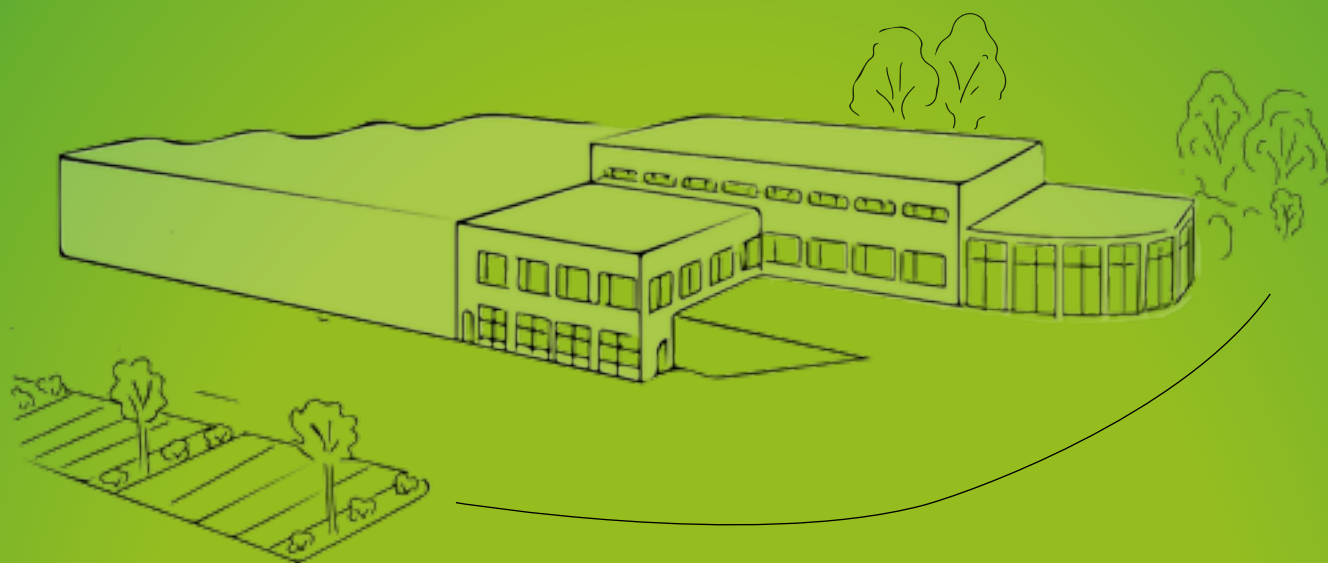


Ident-no.	REF	length (cm)	CH-size	PCS
42400	OS - 210 - 25 YP 400	210	25	50
42401	OS - 250 - 25 YP 400	250	25	50
42402	OS - 300 - 25 YP 400	300	25	50
42403	OS - 350 - 25 YP 400	350	25	50
42404	OS - 210 - 30 YP 400	210	30	50
42405	OS - 250 - 30 YP 400	250	30	50
42406	OS - 300 - 30 YP 400	300	30	50
42407	OS - 350 - 30 YP 400	350	30	40

OP-SUCTION SETS WITH SUCTION ATTACHMENT ILEUS POOL, TYPE „YP-401“



Ident-no.	REF	length (cm)	CH-size	PCS
42410	OS - 210 - 25 YP 401	210	25	50
42411	OS - 250 - 25 YP 401	250	25	50
42412	OS - 300 - 25 YP 401	300	25	50
42413	OS - 350 - 25 YP 401	350	25	50
42414	OS - 210 - 30 YP 401	210	30	50
42415	OS - 250 - 30 YP 401	250	30	50
42416	OS - 300 - 30 YP 401	300	30	50
42417	OS - 350 - 30 YP 401	350	30	40



SEM-Plastomed GmbH
Schulstr. 6
D-57612 Obererbach
Fon: +49 (0) 2681 - 95 07 80
Fax: +49 (0) 2681 - 95 07 818
mail@plastomed.eu
www.plastomed.eu

