



Plastomed

Systems for your life...



Innovative plastic products and systems for medicine and technology

” *Goals can only be reached, when such goals are set yourself. He who has such goals, is much productive.*



1971

Founding of the company SEM - Schmid Elektromontagen GmbH by Herrn Herbert Schmid. Business area: control device technology for industry and hospital construction through to power station construction and automobile construction

1985

Founding of the company Plastomed. Business area: Fabrication, assembly & packaging of plastic semi-finished products

1993

Production takeover of spacers for the construction & paper industry for the enhancement of technological plastic products

2001

Construction of a new production & storage building

1978

Relocation of the company from Altenkirchen to Obererbach / Ww

1990

Development of own in-house products. Construction of a production hall for manufacturing, assembling and packaging of medical products

1997

Merger of SEM - Schmid Elektromontagen GmbH and Plastomed into one company: known today as **SEM-Plastomed GmbH**

Our Company

Ever since 1985, SEM-Plastomed GmbH has stood for innovative solutions and client-orientated services in the field of plastic fabrications and manufactures products at our German location in Obererbach, Westerwald.

Clients from almost every imaginable sector place their trust in technically complicated injection-moulded parts, tubes and profiles as well as medical components, subassemblies and sterile / non-sterile medical products.

Products developed in close cooperation with clients are agreed upon in line with their individual requirements. One of our major strengths is the rapid reaction time we can offer. This applies especially for taking over already running production with existing tools.

2011

Construction of a new raw material storage building for improved material-flow logistics. Introduction of an SPS-controlled material-supply facility. Commissioning of a central technological tool store.

2014

01.08.2014 saw the generation change for SEM-Plastomed GmbH. Company founder & Managing Director Herbert Schmid officially hands over the day-to-day business to his son Dipl.-Ing. (FH) Holger Schmid

2016

Construction & commissioning of a second clean-room production facility in accordance with GMP-C

2021

50th anniversary of SEM-Plastomed GmbH

2008

Construction of a Clean-room production facility acc. to ISO 7

2013

New construction of a reception building

2015

Introduction of the new company logo

2019

Completion of the training and media room

Philosophy

Systems for your life...

Solutions for your success!

We offer our clients innovative plastic products
and systems for medicine and technology.

Commitment to the Client:

Your satisfaction is the driving force & inspiration for our work! We find innovative solutions for your requirements and guarantee the latest cutting-edge technology around.

A sustainable partnership is good for you and gives us the motivation.

Committed to Performance:

In the project planning and implementation, we stand for precision reliability and speed. Data-based analysis of our processes enables a high-quality product and provides the prerequisite for continued improvement.

Commitment to Responsibility:

We take on the responsibility for our activities as manufacturer of medical and technological products. This shapes our behaviour towards our clients, our suppliers and employees, for whom we are a reliable and fair partner. Economical and environmental responsibility with energy and all raw materials is a matter of course for us.



**” To make solutions possible,
I imagine the impossible**

Holger Schmid
Dipl.-Ing. (FH) Kunststofftechnik
Management



Innovative &
qualitatively high
value products

That's what we stand for

Rapid, flexible
and transparent
implementation

Individual
consultation
and advice

Competence,
experience and
trustworthiness

Highest
flexibility,
quality and
reliability

Business areas

Medical technology

Products from SEM-Plastomed GmbH

Medical devices are of fundamental importance in the health care system. Through their diversity and forms of application, they enable us to improve our quality of life and maintain our health. Total trust in the medical product is essential due to its quality and reliability. You are a dealer, a practising doctor or a hospital and you are looking for one of our products from the following areas.

- Suction tubes
- Accessories for suction tubes
- OP suction sets
- Suction cannulas
- Adapters / Connectors
- Oxygen safety tubes
- Stopcocks

Components

You are looking for a reliable partner for your fabrication, a partner you need for your own assembly / packaging? You already have injection moulding tools, or intend to have new built and commissioned, in line with and according to your product specifications?

Contract packaging / Sterilization

You are a market producer & supplier, but have no possibility to package your own products? You are looking for a partner, to package & deliver your products as sterilized because they are medical products, or even non-sterilized?

Manufacturer

You have no machine park or not enough own capacity and are looking for a totally reliable partner who can fabricate your products? No matter whether you use our components, or your own product R & D? You are looking for a suitable partner, a partner to manufacture your products and under your label?

*Get to
know us &
give us a
call!*

Technical Products

Plastic injection moulding and extrusion

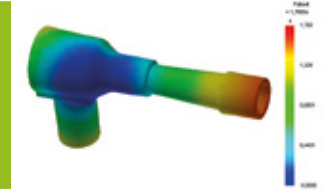
You require technical products in plastic which are made via mould-injection (even 2k) or through extrusion (hoses/tubes/profiles)?

Specialities

Development / Construction



FEM Calculation / Simulation



Tool Construction



Materials:
Processing thermoplastics



Injection-moulding



Extrusion



Assembly



Packaging



Sterilization



Quality Policy

Quality is an essential part of our corporate goals and the basis of all our actions.

Patient Safety

Patient safety is our top priority. With our products, we make an important contribution to the quality of treatment and care in the healthcare system and are aware of our responsibility. The Medical Devices Regulation 2017/745 and ISO 13485 shape our daily work.

Customer satisfaction

Customer requirements and expectations are the focus of our actions. We strive for a high level of customer satisfaction through flexible solutions and sustainable cooperation in a spirit of partnership.

Our employees

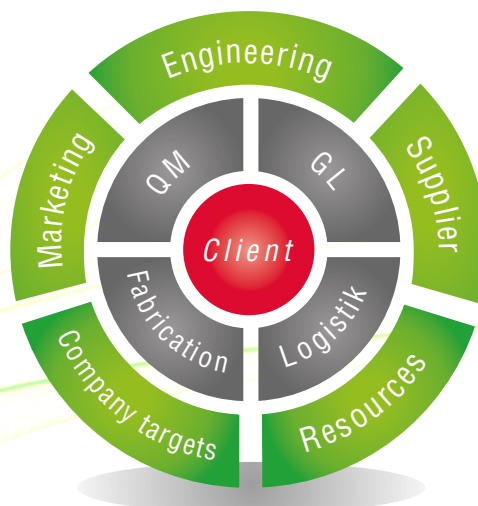
Ensuring the continuous and high quality of our products and services is the task of every employee in our company. The continuous training and qualification of our employees are therefore important to us.

Quality and continuous improvement

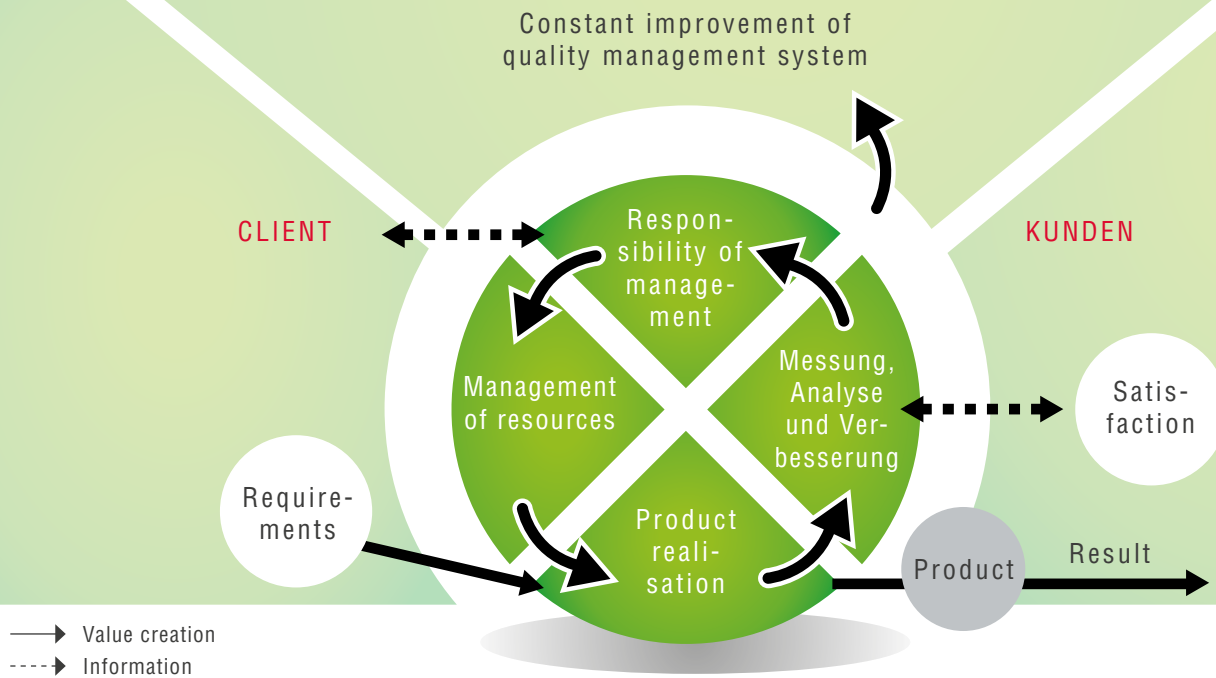
The continuous improvement of our internal processes and procedures is essential for our work in order to maintain a high level of quality and to directly avoid errors early in the creation.

Economic and social responsibility

We take responsibility for our actions as a manufacturer of medical and technical products, but also in society. This shapes our entire business behaviour, which is why we see ourselves as a reliable and fair partner.



Model of Process-orientated Quality Management System



QM-System

To best fulfil client requirements, for planning, implementation, monitoring and continual further development of all quality-relevant activities as well as improvement client satisfaction, we maintain a certified quality management system in accordance with EN ISO 13485. Furthermore, we will take into account the applicable requirements of Regulation 2017/745 MDR in the future.

A clearly defined in-house Quality Policy is made possible through well-planned measures. One very important aspect for the politics of quality is all involved are fully aware of the need for quality-conscious, client-orientated and responsible workmanship.

Demands laid down in the Medical Products Law have been integrated to adhere to national law.



QS-System

Making use of process-related quality advanced planning, modern measurement methods, product-specific work procedures and trained personnel, we apply the requirements for fabrication of high quality individual products as well as complex subassemblies.

Throughout the duration of the whole fabrication phase the product has to undergo a continuous control carried out by our individually responsible members of staff. This feeling of individual responsibility motivates and binds the man to the product. A parallel control, based upon random spot checks completes the quality monitoring activities.



Clients

Medical technology in Germany and the rest of Europe revolves around:

- Medical product manufacturers
- Medical device manufacturers
- Clinics / hospitals
- Aesthetic & plastic surgeons

Technology-related plastic products for the following sectors are supplied to national & international clients:

- Paper industry
- Automobile industry
- Ventilation & air-conditioning
- Household products
- Mechanical engineering
- Agricultural machines
- Electronic industry

Technical Data

Floor area	4000 m ²
Total operating area	2600 m ²
No. injection moulding machines	12
Closing force	up to 1500 KN
Injection weight	up to 450 g
Extrusion plant	2
No. packaging machines	2
Room with controlled conditions	275 m ²
Clean-room 2	150 m ²
Clean-room 3	250 m ²



SEM-Plastomed GmbH
Medizin- und Kunststofftechnik
Schulstr. 6
D-57612 Obererbach
Fon: +49 (0) 2681 - 95 07 80
Fax: +49 (0) 2681 - 95 07 818
mail@plastomed.eu
www.plastomed.eu



EUROPÄISCHE UNION
EUROPÄISCHER FONDS FÜR
REGIONALE ENTWICKLUNG
(ERF)



Rheinland-Pfalz